

An aerial photograph of Sutton Harbour in Plymouth, showing numerous sailboats docked in the marina, the surrounding city buildings, and the sea in the background. The image is partially covered by a dark blue circular graphic on the right side.

SUTTON HARBOUR

SUTTON MARINAS

A SAFE HAVEN IN THE HEART OF
PLYMOUTH WHERE THE CITY
MEETS THE SEA



A FIRST-CLASS MARINA IN SOUTH WEST ENGLAND

Sutton Harbour, Plymouth's historic link between the city and the sea, provides exceptional shelter and a marina team dedicated to looking after you, your family and your vessel.

- Secured behind protective double lock gate
- Modern facilities and a lively nautical village
- Outstanding selection of restaurants, cafés, bars, shops and year-round visitor attractions
- Perfectly placed to explore the South West
- First-class homeport sets a new standard for excellence

WELCOME TO SUTTON MARINA

UNRIVALLED SHELTER

Safely tucked behind a set of double lock gates, Sutton Harbour Marina provides peace of mind and a guaranteed depth of water at all stages of the tide.

Sutton Lock is staffed 24/7 with access available upon request. There is a free flow period of up to three hours either side of high tide when locking through is not required.

The lock has the following dimensions:

WIDTH: 12 metres

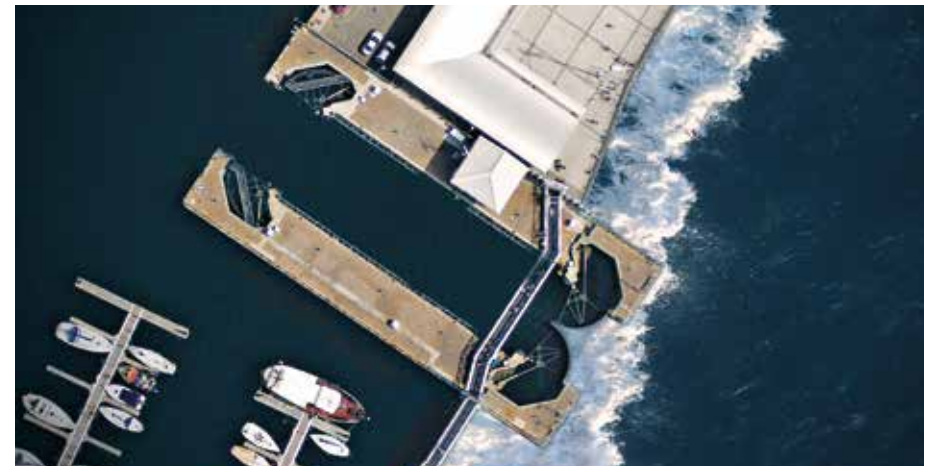
LENGTH: 44 metres

HEIGHT OF INNER CILL:
1.5 metres below chart datum

All boat movements are controlled by traffic lights.



Sutton Lock



Lock Protection



SERENITY INSURANCE

Whether on your boat or at home, you can be safe in knowledge that your vessel couldn't be in a safer place. This is underpinned by our exclusive insurance arrangement, Serenity, in association with Pantaenius Insurance, ensuring you pay no deductible on claims which occur within Sutton Harbour.



RELAXATION OR ADVENTURE, AFLOAT AND ASHORE

Sutton Harbour Marina occupies an enchanting position in the heart of Plymouth's historic waterfront quarter, providing superb facilities and a team dedicated to looking after you, your family and your vessel.

The marina is surrounded by an outstanding year-round selection of restaurants, cafés, bars and shops. The city centre and Drake Circus Shopping Centre, home to major high street retailers, is just a few minutes' walk away. Leisure opportunities for all ages are also nearby including cinemas, theatres and galleries.



Situated midway along the Devon and Cornwall coastline, Sutton Harbour Marina is perfectly sited at the centre of some of the UK's finest cruising grounds. The tidal rivers Tamar and Yealm are close by, while Salcombe and Dartmouth to the east, and Fowey and Falmouth to the west, are all within a day's sail.



Our berth holders can relax and enjoy first-class facilities as well as a full calendar of lively social, educational and practical events. Relax indoors, or on our al fresco deck, with complimentary coffee and tea available.



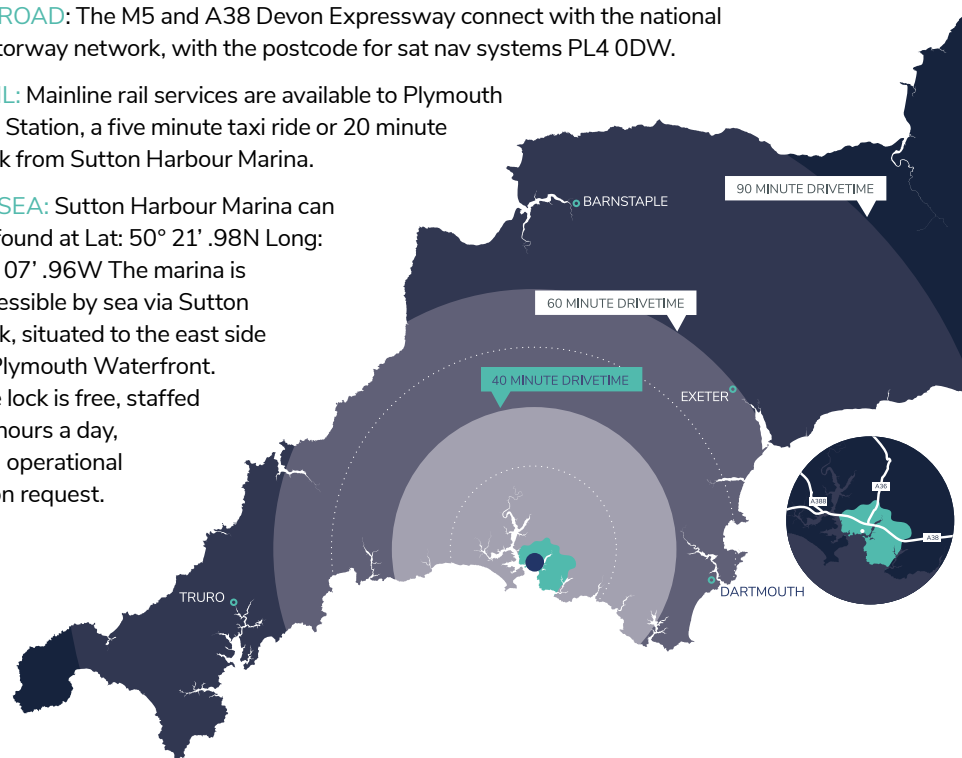
LOCATION

Plymouth is well served by road and public transport services.

BY ROAD: The M5 and A38 Devon Expressway connect with the national motorway network, with the postcode for sat nav systems PL4 0DW.

RAIL: Mainline rail services are available to Plymouth Rail Station, a five minute taxi ride or 20 minute walk from Sutton Harbour Marina.

BY SEA: Sutton Harbour Marina can be found at Lat: 50° 21' .98N Long: 04° 07' .96W The marina is accessible by sea via Sutton Lock, situated to the east side of Plymouth Waterfront. The lock is free, staffed 24 hours a day, and operational upon request.



Sutton Harbour Marina is in the heart of historic Plymouth, which makes it easy to explore the South West, being equally as close to Cornwall and its spectacular coastline as it is to the rugged moors of Devon.

Plymouth has one of the finest deep water harbours in the country and offers direct access to some of the best cruising waters in the UK, including the Rivers Yealm, Tamar and Lynher which are all within easy reach for a day trip.

Stunning Devon destinations like Dartmouth, Salcombe, Brixham and Torquay are to the east, and picturesque Cornish ports like Fowey and Falmouth are to the west.

Further afield lie the beautiful Isles of Scilly, just 94 nautical miles away, and the Channel Islands or French coast are also within striking distance.



DARTMOOR NATIONAL PARK

Head inland to the majestic moors to enjoy the peace and quiet or get active by walking, cycling or hiking.



DARTMOUTH

Situated on the banks of the River Dart, take a day trip to Dartmouth and enjoy all this quaint town has to offer.



SALCOMBE

Within easy distance for day trip, sail to Salcombe, a popular resort town that has a waterfront and a sheltered harbour.



THE EDEN PROJECT

Just an hour's drive from Plymouth, enjoy a visit to the largest rainforest in captivity, with stunning plants and exhibitions.



FOWEY

Easy to reach for a day's sailing, Fowey is a Cornish historic harbour town set in an Area of Outstanding Natural Beauty.



FALMOUTH

Based around a thriving harbour, the beautiful town of Falmouth is easy to reach from Sutton Harbour for a day trip to Cornwall.

ALWAYS SOMETHING TO DO

Sutton Harbour boasts a range of some of the best restaurants, shops and attractions in Plymouth, from those of major historical significance to family-friendly fun. The marina is also the perfect base to explore the rest of this vibrant city. Here are a few nearby selections...

NATIONAL MARINE AQUARIUM

Exciting fun for all the family, the perfect destination for all-weather entertainment.
www.national-aquarium.co.uk

THEATRE ROYAL

Plymouth is proud to be home to one of the UK's top regional production theatres. As well as attracting major touring productions, opera, ballet and musicals, the Theatre Royal launches some of the biggest hit shows before they move on to their West End debuts. The Theatre Royal was opened by HRH Princess Margaret in 1982 and has since showcased some of the country's leading productions and has had some of the biggest stars grace its stage.
www.theatreroyal.com

PLYMOUTH PAVILIONS

An all-round entertainment venue, Plymouth Pavilions offers an ice skating rink and a full-sized arena hosting concerts for some of the biggest names in music, dance and comedy. Plymouth Pavilions is just a short walk away from Sutton Harbour and is a great place for fun, family activities or an exciting evening of live entertainment.
www.plymouthpavilions.com

DRAKE CIRCUS SHOPPING CENTRE

Home to a huge range of popular brands and high street shops as well as a wide-ranging food hall expanding across the top floor. The surrounding city centre streets are filled with even more shops, cafés and restaurants, so you are really spoilt for choice.
www.drakecircus.com

THE BARBICAN LEISURE PARK

A popular dining and entertainment destination with numerous restaurants, multi-screen Vue cinema, a tenpin bowling alley and arcade.
www.barbican-leisure.co.uk

PLYMOUTH HOE

A must-see destination, Plymouth Hoe is home to the iconic Smeaton's Tower lighthouse and a famous war memorial. A natural vantage point with a huge green area and amazing views, the Hoe also hosts many of Plymouth's major events and festivals, including the spectacular British Firework Championships.
www.visitplymouth.co.uk/explore/areas-to-visit/the-hoe

For more information:
www.visitsuttonharbour.co.uk



FOOD AND DRINK

Sutton Harbour Marina is just metres from some of the best restaurants, bars, cafés and attractions in Plymouth, and all are within a few minutes' walk of your berth. These are some of our favourites...

ROCKFISH SUTTON HARBOUR

Owned by celebrity chef Mitch Tonks, Rockfish is situated on the east side of the harbour. Rockfish serves fresh, sustainable seafood, salads and sides sourced locally.

www.therockfish.co.uk

THE STABLE

The Stable offers up more than 80 varieties of cider to accompany its delicious sourdough base pizzas, using homemade sauce and locally obtained ingredients. This Westcountry chain is based on Little Vauxhall Quay and is a popular addition to the harbour.

www.stablepizza.com

THE SHIP

A lively, welcoming pub right in the heart of the harbour, The Ship is one of the most popular venues along the waterfront and serves traditional pub grub and a variety of alcoholic and soft drinks.

www.theshipplymouth.co.uk

HONKYTONK WINE LIBRARY

HonkyTonk houses wines from all around the world for you to enjoy in their wine lounge or to take home. Based on North East Quay, the stylish lounge serves locally sourced and homemade deli foods and a variety of warm and soft drinks.

www.honkytonkwinelibrary.com

SUPHA'S

Supha's is a small independent eatery situated at East Quay House serving fresh, seasonal street-food style meals with strong Asian influences. Dish inspirations come from Thailand, Malaysia and Vietnam, and this vibrant venue will transport you across the world with its bold, exotic flavours.

www.suphas.co.uk

MILLER & CARTER STEAKHOUSE

Miller & Carter boasts the best steaks in Plymouth, serving hand-cut, 30 day aged British and Irish meat from handpicked farms. The rustic steakhouse is located at Sutton Road and has a breath-taking view over the harbour that you won't want to miss.

www.millerandcarter.co.uk

BOSTON TEA PARTY

On the border of Vauxhall Street and Exchange Street, Boston Tea Party serves a variety of food from breakfast and brunch to burgers and flatbreads, with a huge array of vegan and veggie options.

www.bostonteatarty.co.uk

For more information:

www.visitsuttonharbour.co.uk



EXPERIENCE CARD

Berth your boat at Sutton Harbour Marina and benefit from our Loyalty Card – The Experience Card.

The card offers discounts at local restaurants, bars and attractions to help make the most of your stay. Berth holders enjoy 10% off tickets to the National Marine Aquarium and 10% off meals at many restaurants, including Boston Tea Party, The Ship and The Boathouse Café, as well as discounted chandlery, marine electronics, engineering and yard services.



EVENTS

Come rain or shine, there is always something happening in this bustling, dynamic waterfront city. World-class events are frequently hosted in Plymouth and with its long-established marine history, various water-based events make their way to the harbour, from tall ship visits to sailing rallies. Here are some highlights...

PLYMOUTH PIRATE WEEKEND (MAY)



A weekend of swashbuckling fun with the annual pirate-themed two-day event full of great entertainment and activities for the whole family. From sword fighting demonstrations to re-enactment displays, it's a thrilling adventure right in the heart of Plymouth's historic quarter.

PLYMOUTH SEAFOOD FESTIVAL (SEPTEMBER)

An annual festival to celebrate and support the local seafood industry spanning two days over a weekend. With regional and celebrity chefs making appearances, demonstration stages and boatloads of sensational, sustainable seafood to be enjoyed all along the harbour.

BRITISH FIREWORKS CHAMPIONSHIPS (AUGUST)



This annual event is a real showstopper. Thousands of people gather on Plymouth Hoe and Sutton Harbour to watch the UK's top six fireworks teams present their spectacular displays across two nights. One of the highlights in the summer events calendar, the firework championships is a free event and is a go-to evening out for all the family.

CHRISTMAS FESTIVITIES

Sutton Harbour and the Barbican is especially atmospheric at Christmas. The city's annual Christmas market takes place in December with up to 60 stalls filled to the brim with food, drink and gifts, so you are sure to find something to suit everyone on your present list.

For more information:
www.visitplymouth.co.uk



SAILING EVENTS

Plymouth has long been a sailing hub for both professionals and hobbyists. Sutton Harbour Marina hosts world-class sailing events and rallies every year, bringing some of the best sailors to the city and welcoming vessels visiting Plymouth.

Previous major international sailing events hosted at Sutton Harbour include The Transat, La Solitaire du Figaro, as well as the finish of the Rolex Fastnet Race.

Annual events attract an ever-increasing number of historically important vessels to the harbour and visitors pack the waterfront to catch a glimpse of the beautiful boats moored in the marina.

Local sailing clubs also put on a number of race events yearly such as the Plymouth Regatta, the Winter Laser Series and Plymouth Gin Spring Yacht Series.



SERVICES



SUTTON HARBOUR MARINA IS A 5 GOLD ANCHOR MARINA AND OFFERS ALL STANDARD AMENITIES PLUS:

FULLY SERVICED BERTHS

All our berths have local utility connections and nearby pump out facilities.

24-HOUR ACCESS

All our berths are secure walk-ashore berths with 24-hour gated access, monitored by on-site personnel and CCTV.

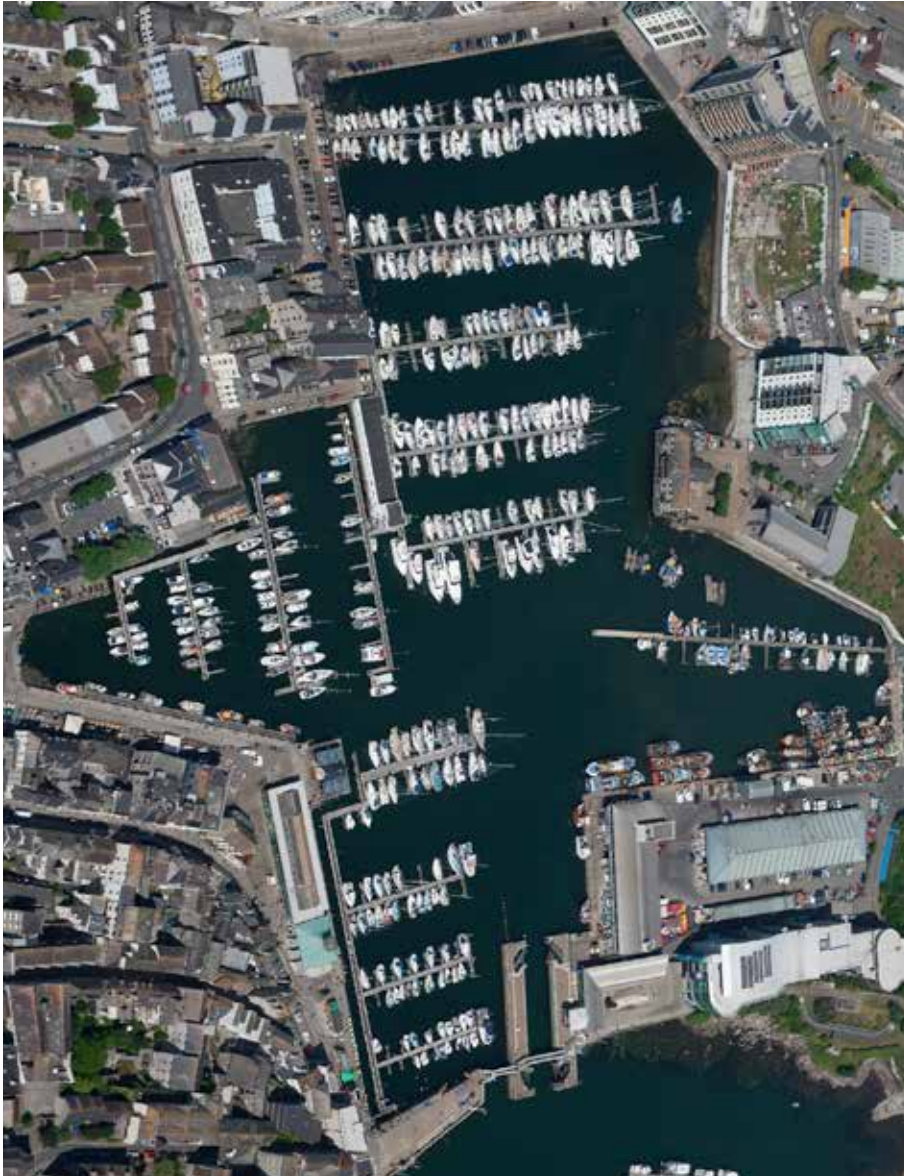
CAR PARKING

Ample on-site car parking just metres from your berth.

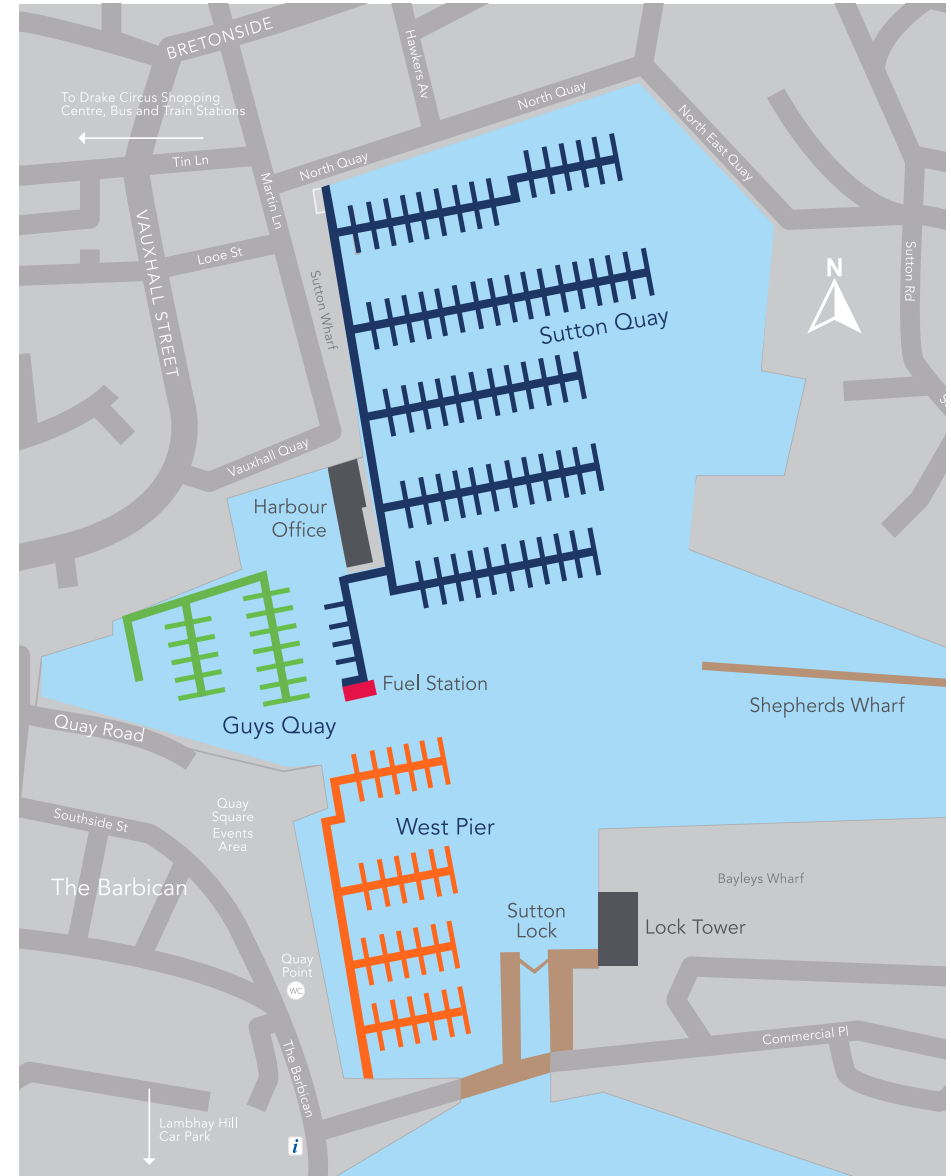
Sutton Harbour Marina offers a dedicated team delivering first-class customer service for you, your family and your vessel. A warm welcome awaits you at our reception office.

- Free WiFi connection
- First-class wetrooms
- Laundry facilities
- Diesel fuel sales
- Free berthing assistance
- Network of recognised contractors and chandleries
- Complimentary coffee/tea
- AI fresco deck
- Indoor seating
- Social events

AERIAL VIEW OF SUTTON HARBOUR

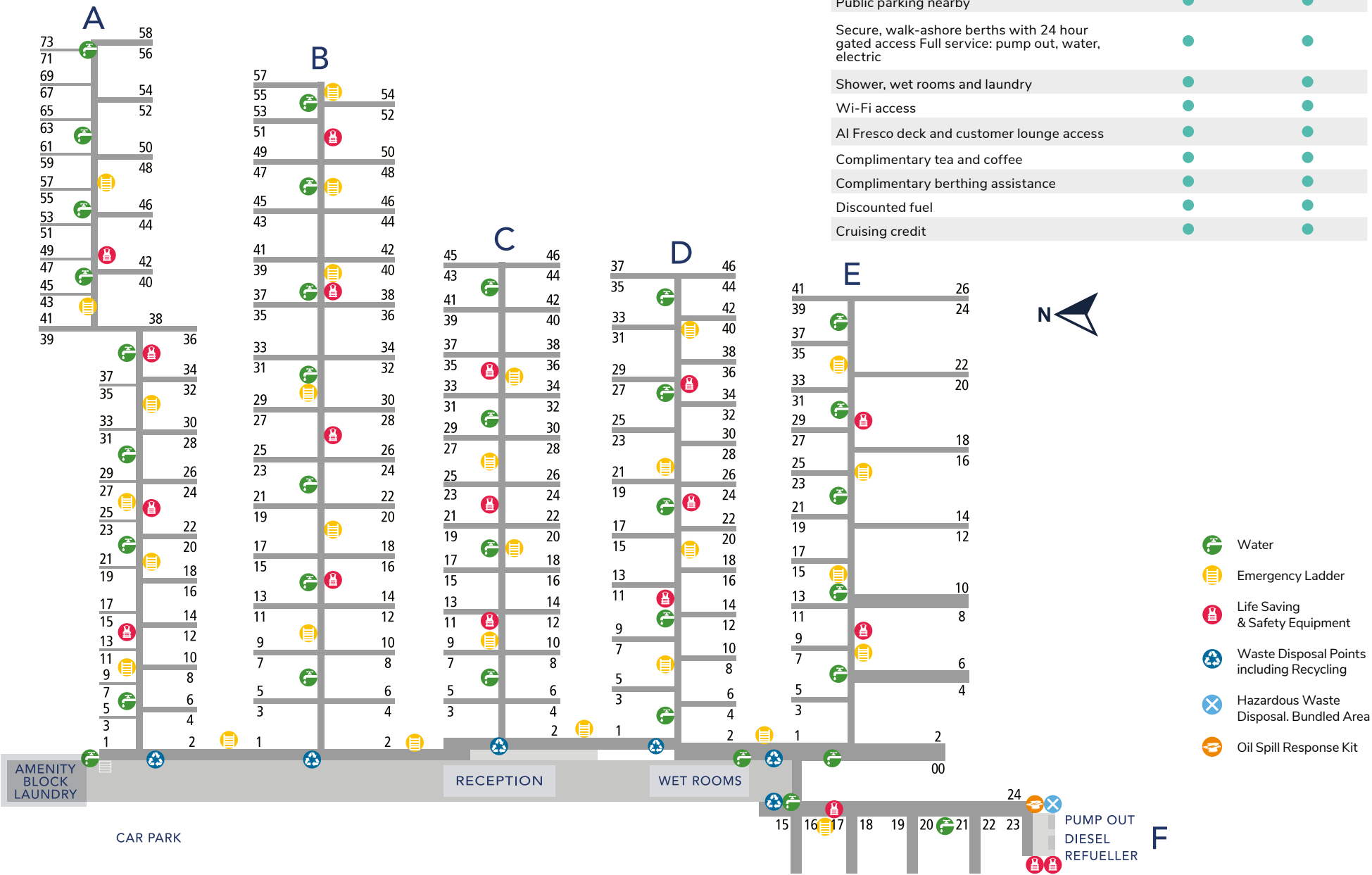


SUTTON HARBOUR MARINA PLAN



SUTTON QUAY - PREMIUM/PLUS PACKAGES

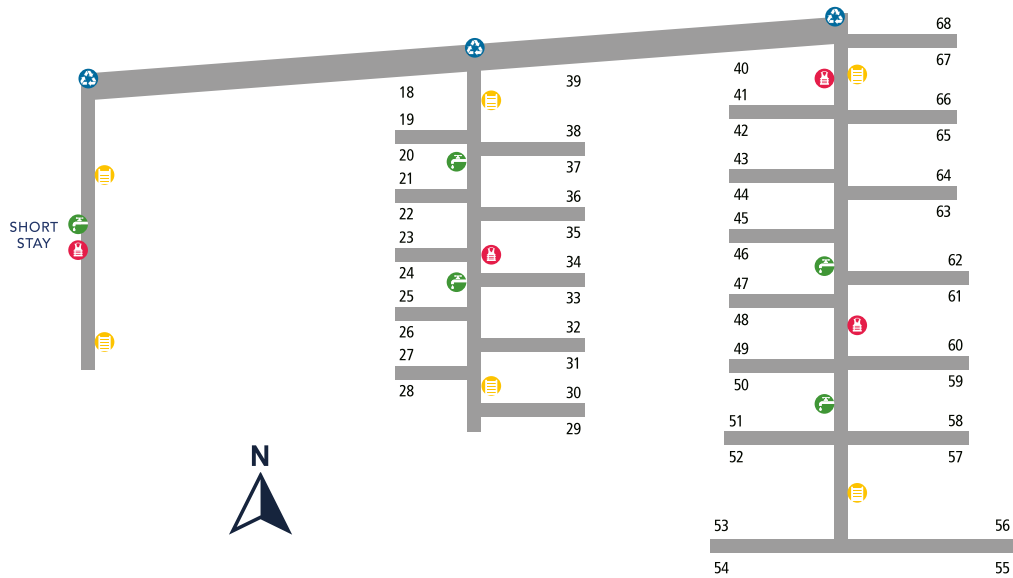
Enjoy the highest quality amenities in the exclusive Sutton Quay with our Premium or Premium Plus packages.



GUY'S QUAY - ESSENTIALS PACKAGE

WEST PIER - ESSENTIALS PACKAGE

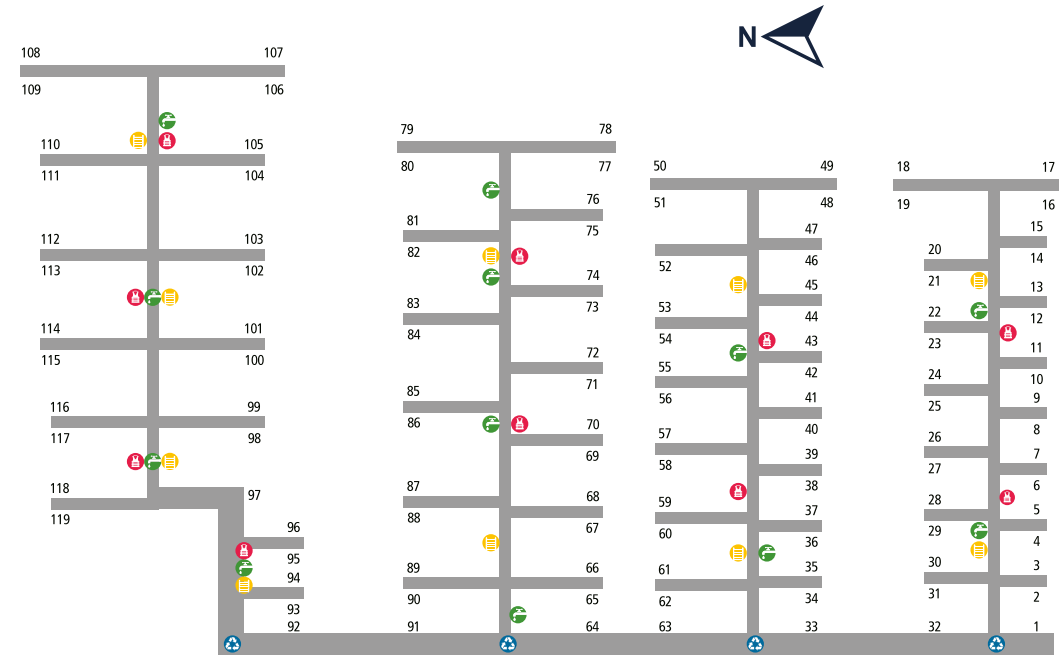
The Essentials Package in Guys Quay and West Pier offers fantastic value for money, with 24-hour gated access to walk-ashore berths in the centre of the city, combined with the security of double lock gates protecting your vessel in all weather conditions.



- Water
- Emergency Ladder
- Life saving & Safety Equipment
- Waste disposal Points including Recycling

KEY ESSENTIALS FACILITIES:

- Public parking nearby
- Secure, walk-ashore berths with 24 hour gated access
- Full service: pump out, water, electric



Unsure which berthing package best suits your requirements?

Give a member of our dedicated team a call on 01752 204 702



SUTTON MARINAS

Sutton Harbour Marina, The Jetty
Plymouth, Devon PL4 ODW

01752 204702

marina@sutton-harbour.co.uk

www.suttonharbourmarina.com

VHF Channel 12