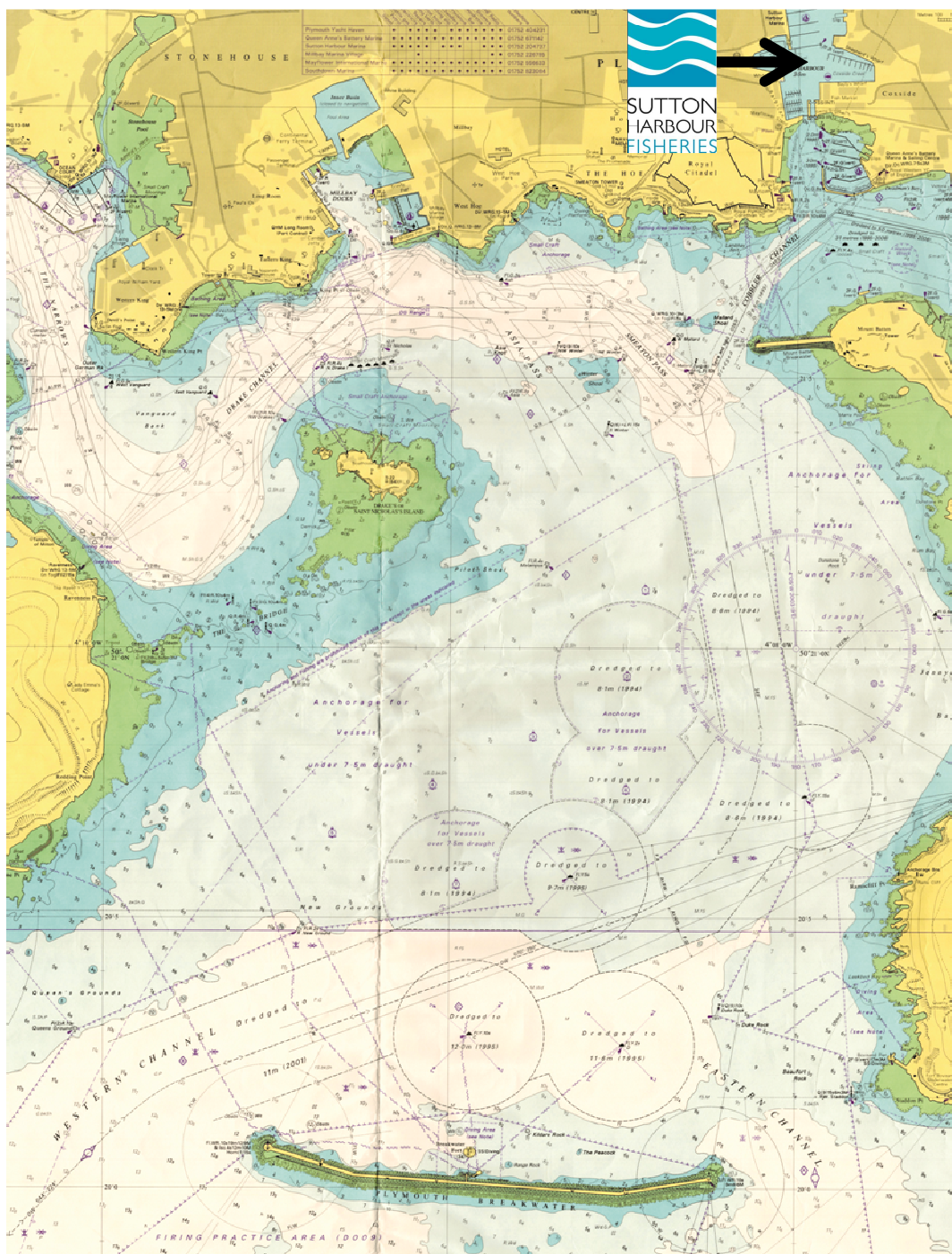


Approaches to Plymouth and Sutton Harbour

(NOT TO BE USED FOR NAVIGATION)



Landing facilities at Sutton Harbour

Sutton Harbour can be accessed at most states of the tides through the lock gates which are permanently manned, communication is by VHF channel 12.

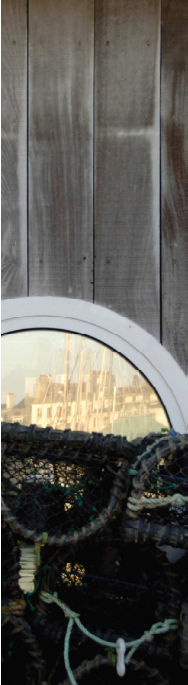
The lock barrel is 44 meters long and 12 meters wide and controlled by traffic lights. Please contact the lock tower and confirm your vessels draft before entering Sutton Channel. **Minimum permitted under keel clearance through the lock is 0.5 meters.**

Sutton Harbour Fisheries is one of the largest fresh fish markets in England and offers a full range of services and facilities to the commercial fishing fleet. Which include fuel, ice, water and quayside power. For full details contact Plymouth Trawler Agents on 01752 262816 or the Sutton Harbour Fisheries Manager on 07860 863150.

Important Environmental Information

Never allow rubbish to fall overboard. Full Waste reception facilities are available in Sutton Harbour and at other landing sites within the Port of Plymouth. Do not allow fuel or oil to spill into the water, all fuel spills must be reported immediately

A quick guide for skippers of commercial fishing vessels using Plymouth



Approaching Plymouth

Plymouth Sound is protected by its Breakwater and can be entered by either the Western or Eastern channel both of which are buoyed and well lit. Once inside the Sound there are no real hazards and no shoals with less than 3.7 meters at M.L.W.S. The marked deep water channels are used by H.M. ships, bulk carriers, large tankers and cross channel ferries and when possible vessels should cross the marked channels at right angles. All vessels under 20 meters in length must give way to vessels over 20 meters in length and all vessels must keep 100 meters clear of all military vessels both alongside and at anchor.

Plymouth Sound is widely used by recreational vessels, swimmers and divers and particular care should be taken when navigating through The Sound. Fishing vessels wishing to cross Plymouth Sound should first contact Longroom Port Control on VHF Channel 14 for permission and a listening watch should be kept on VHF Channel 14 at all times whilst within the Dockyard port limits.

Fishing vessels wishing to enter Sutton Harbour, which is located at the N.E. corner of Plymouth Sound, should contact Sutton Harbour Lock on VHF channel 12 and await instructions. **For safety reasons wash must be kept to a minimum whilst navigating Sutton Channel, public landing stages are in constant use**

Speed Limits

Inside the breakwater	10 knots*
The Cattewater	8 knots
Sutton Channel	4 knots
Sutton Harbour	Dead Slow

VHF Working Channels

Sutton Lock Working Channel	VHF ch 12
Queens Harbour Master	VHF ch 14
Naval & Commercial Port Control	VHF ch 14
After exiting Sutton Harbour vessels should immediately maintain a listening watch on VHF ch 14	

Towing & Use of Pilots

Any vessel of 50 meters or over will require a pilot when proceeding to a berth in the Port of Plymouth. As will any vessel towing another vessel when the overall length of the tow is 50 meters or over.

Useful Telephone Numbers

Sutton Harbour Lock	01752 204732
Cattewater Harbour Master	01752 665934
Plymouth Pilots	01752 662708
QHM Port Control	01752 663225
Sutton Harbour Master	07860 863150
Plymouth Trawler Agents	01752 262816
Victoria Wharf	01752 663175
Millbay Docks	01752 662191

Incident Reporting

Any incident that reflects on the safe use of The Port of Plymouth is to be reported immediately to the Queens Harbour Master, such incidents are considered to be:

- Any groundings or collisions
- Damage to vessels, navigation marks, property or persons
- Movement or defects of navigational marks
- Close quarter incidents resulting in emergency action

Dangerous Cargo

Any previously discarded ordinance brought aboard fishing vessels should not be brought into port. Skippers must contact Longroom Port Control whilst still in open water and wait for instructions

**Except vessels under 15meters OAL may exceed the speed limit in Plymouth Sound outside of 400 meters from the shore or in the designated high speed areas.*